

VINYL SHEET FLOORING

ROBUST
AND RELIABLE

DISTRIBUTORS OF

**BEAU
FLOR**[®]
we decorate your floor

RESPONSIVE
We listen. We're responsive.

DISTRIBUTED BY **AFS** AUSTRALIAN
FLOORING
SUPPLIES



PRODUCT APPLICATIONS

- Housing
- Offices
- Education
- Hospitality
- Public Space
- Retail spaces

SIZE (WIDTH)

2m

LENGTH

20 LINEAL
METRES

THICKNESS

2.5mm

WEAR LAYER

0.7mm

Ambient

HEAVY DUTY VINYL SHEET

With a tough 0.7mm wear layer, Ambient is perfect for large installations, heavy domestic, commercial and light industrial use.

Our Ambient vinyl sheet range has decors that emulate the look of timber with the durability of vinyl. Ambient offers a stunning balance between sophistication and bold new styles blending seamlessly to provide a chic and stylish palette.

Available in a myriad of hues and stipple designs, this range is not only aesthetically pleasing but able to withstand intense traffic with its 0.7mm wear layer and 2.5mm thickness.

R10 Slip Rating for a high anti slip surface in wet and dry conditions

Special dirt resistant wear layer

100% Recyclable product

10 year commercial warranty

20 year residential warranty

Class Rating 23, 33, 42

Easy to maintain

Waffle back emboss - providing better adhesion

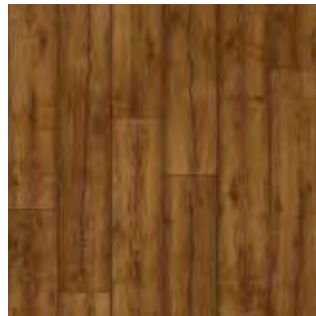
Faster installation

Phthalate free

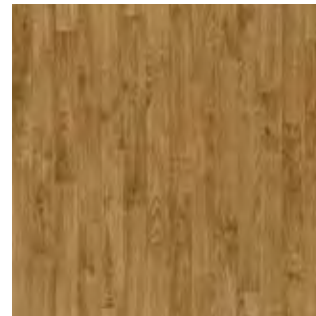
VOC Compliant



HAVANNA OAK
669D



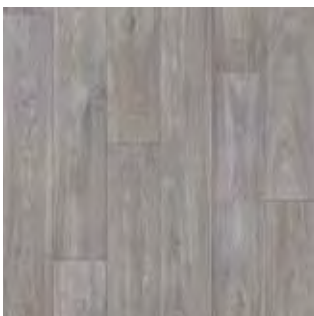
ANTIQUE OAK
026M



HONEY OAK
636M



GOLDEN OAK
696L



HAVANNA OAK
991M



EDITH
777D



EDITH
999D



EDITH
997M



PRODUCT APPLICATIONS

- Safety and Transport
- Marine
- Wet Areas
- Fitness Centres
- Healthcare
- Laboratories
- Education

SIZE (WIDTH)

2m

LENGTH

20 LINEAL METRES

THICKNESS

2mm

WEAR LAYER

1mm

Canopus Plus

SAFETY VINYL SHEET

SAFETY VINYL

Robust and reliable, Canopus Plus® is the safety floor of choice where tough performance and durability are most important.

The Canopus Plus® range of safety vinyl sheet flooring combines high performance with attractive designs that will transform any commercial space.

The R11 slip rating makes Canopus Plus® ideal for

industrial and commercial specification projects, where safety and high slip resistance are paramount.

With its 1mm wear layer Canopus Plus® is also widely used for heavy foot traffic areas.

R11 Slip Rating in wet and dry conditions

Sureclean™ surface treatment for a dirt resistant surface

Low smoke density

10 year commercial warranty

Antifungal and antibacterial

Decorative effect achieved with carbide particles

Better dimensional stability - with a reinforced glass fibre grid

Class rating 34, 43

Easy to maintain

Chemical resistant

VOC Compliant

No wax or polish required

Phthalate Free

FEATURES AND BENEFITS



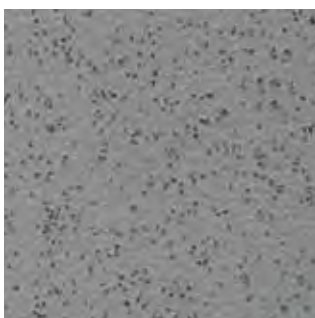
SMOKE
4419-322-4



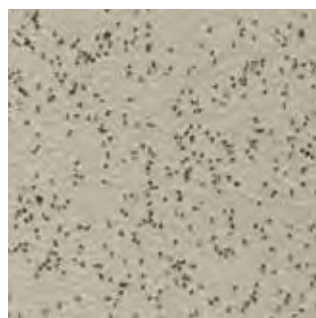
MIDNIGHT
4419-329-4



GREY TOWN
4419-504-4



PEWTER
4419-324-4



SAND
4419-502-4

Ambient

HEAVY DUTY VINYL SHEET



SIZE (WIDTH)	LENGTH	THICKNESS	WEAR LAYER
2m	20 LINEAL METRES	2.5mm	0.7mm

Characteristics	Standards	Ambient
Phthalate Free		Yes
Dimensional stability	EN ISO 23999 (EN 434)	≤ 0.40%
Curling	EN ISO 23999	≤ 8mm
Light stability	EN ISO 105 B02	≥ 6°
Residual indentation	EN ISO 24343-1 (EN 433)	≤ 0.10mm
Impact sound improvement	EN ISO 717/2	Δ Lw 13dB
Dynamic coefficient of friction	EN 13893	> 0.6
Slip resistance (ramp test with oil)	DIN 51130	DS
Reaction to fire Report number VNLf 031380.4	EN 13501-1	Bfl-s1 class
Underfloor heating	EN 12667	Suitable
Thermal resistance	ISO 8302	0.025 m²K/w
Thermal conductivity	EN 12524	0.10 W/(m.K)
Chemical resistance/effect of stains	ISO 26987 (EN 423)	Resistant
Static Electrical Propensity	EN 1815	< 2kV
Delamination test (peel resistance)	EN ISO 24345	≥50N/50mm
Furniture leg resistance	ISO 16581 (EN 424)	No damage
Castor chair resistance	EN ISO 4918	Suitable (type wheel H)
General performance		23: Heavy duty residential 33: Heavy duty commercial 42: Light industrial use
Sheet size		m (width) 2 m (length) 20 m² (surface area) 40
Slip resistance	DIN 51130	Ramp test: R10
	BS 7976 - 2	Wet Pendulum Test - 36+ (Low Slip Potential) P4
	AS 4586 - 2013 Appendix A	
	EN 13893 ASTM D2047	DS

Please note that the data given could be imprecise and liable to modifications of a technical nature at any time. The information in these documents is valid from 01/01/2017 and Beauflor reserve the right to make changes at any moment and without prior notice. Our technology is constantly evolving, so before carrying out any projects we encourage you to contact AFS to maintain our highest level of standards.



100% phthalate free
*for all products produced
from May 2017 onwards



AFS Global Services

RESIDENTIAL COMMERCIAL

Canopus Plus

SAFETY VINYL SHEET

RESPONSIVE
We listen. We're responsive.

TECHNICAL INFORMATION

SIZE (WIDTH)	LENGTH	THICKNESS	WEAR LAYER
2m	20 LINEAL METRES	2mm	1mm

Characteristics	Standards	Units	Canopus Plus®
Phthalate Free			Yes
Indoor Air Quality	CA Section 01350 ($\leq 0.5 \text{ mg / m}^3$)	Floorscore Certified (SCS - FS - 04547)	Yes
	ISO 16000-6, TVOC after 28 days	$\mu\text{g/m}^3$	< 10 (Fully compliant)
Description			
Type of floor covering	EN 13845 EN 13553	Classification	Safety Vinyl Flooring
General Performance	ISO 10874 - EN 685		34: Very Heavy Commercial. 43: Heavy Light Industrial
Usage / Wear Resistance	BS EN 649	Group	T ($\leq 2 \text{ mm}^3$)
Special Treatment			Anti-slip surface with silicon carbide granules. SureClean™
Overall Thickness	ISO 24346 - EN 428	mm	2.00
Weight	ISO 23997 - EN 430	g/m^2	3400
Sheet Size	ISO 24341 - EN 426	m (width)	2
		m (length)	20
		m^2 (surface area)	40
Castor chair test	ISO 4918 - EN 425	Type of use	Continuous
Slip resistance	EN 13845	Wear Resistance Rating	ESf & ESb ($\leq 10\%$ particles lost over 50,000 cycles)
	DIN 51130	Ramp Test	R 11
	BS 7976 - 2	Wet Pendulum Test	36+ (Low Slip Potential)
	AS 4586 - 2013 Appenix A		P4
	EN 13893 ASTM D2047	Coefficient of friction	DS (< 0.30) Pass (0.70 Avg)
Dimensional stability	ISO 23999 - EN 434	%	≤ 0.40
Flexibility	ISO 24344 - EN 435	20mm mandrel	< 20
Seam Strength	ISO 16906	N/50mm	Pass
Residual indentation	ISO 24343 - 1 - EN 433	mm	≤ 0.10
	ASTM F970	psi	800
Colour fastness to light	EN ISO 105 - B02	Degrees	≥ 6
	ASTM F1515	$\Delta E \leq 800$ after 300 hours (colour change)	Pass
Static electrical propensity	EN 1815	kV	< 2.0
Thermal resistance	EN 12667	$\text{m}^2 \text{ k/W}$	Approx 0.01 $\text{m}^2\text{k/W}$ (suitable at 27°C)
Heat Stability	ASTM 1514	$\Delta E \leq 0.80$ (colour change)	Pass
	EN ISO 9239-1	kW/m^2	≥ 8
Reaction to fire	EN ISO 11925-2		Pass
	EN 13501-1 : 2007+A1	Class	Bfl - S1
	ASTM E 648	Type	1
Smoke density	ASTM E 662	Dm	< 450
Stain & chemical resistance	ISO 26987 - EN 423	Index	0 (Excellent resistance)
Maritime usage	IMO RES A 653 (16)		Annex 1 Part 2 (Smoke & Toxicity)
	IMO MSC 61 (67)		Part 5 (Spread of Flame) and Annexure 2
	Marine Equipment Directive		1121



COMMERCIAL

SCS Global Services



Australian Flooring Supplies

68 Prosperity Way
Dandenong South VIC 3175

P 1300 737 155

E salesaust@qep.com

W qep-aust.com.au/afs

DISTRIBUTED BY

